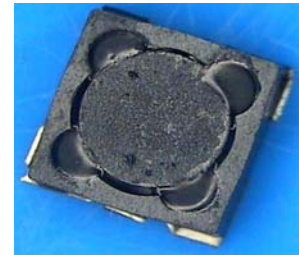


# PIS3D15(P) Series

## Low Profile SMD Inductors for Power Line

### FEATURES

- The PIS3D15(P) series are characterized by low profile, low RDC, and high current handling capacities.
- Magnetically shielded structure that ensures the high-density mounting configurations.
- Flat bottom surface ensures secure, reliable mounting.
- Provided in embossed carrier tape packaging for use with automatic mounting machines.



### APPLICATIONS

Low profile/ large current specifically suitable for Portable telephones, hard disk drives, PDA, DSC and other electronic equipments.

### PRODUCT IDENTIFICATION

PIS 3D15 (P) - 3R3 M - T

(1) (2) (3) (4) (5) (6)

(1) Product name

(2) Shapes and Dimensions(LxWxT)

(3) Alternative Layout type

(4) Inductance

3R3 : 3.3uH ; 100 : 10uH

(5) Tolerance

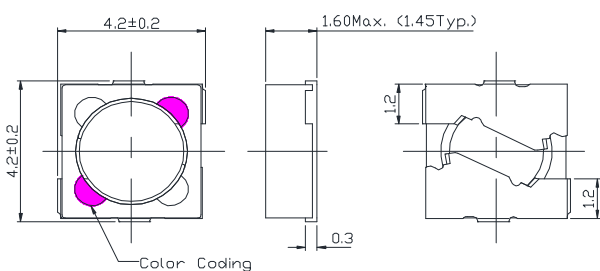
M :  $\pm 20\%$ , N :  $\pm 30\%$

(6) Packaging style

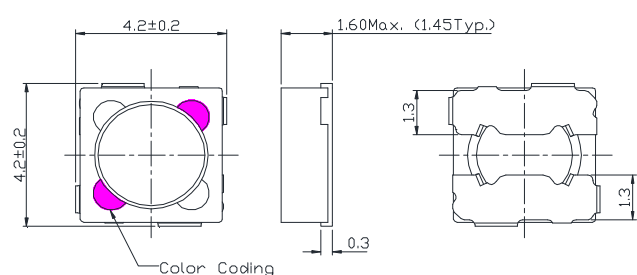
T : taping ; None : Bulk

### SHAPES AND DIMENSIONS(mm)

(1) PIS3D15

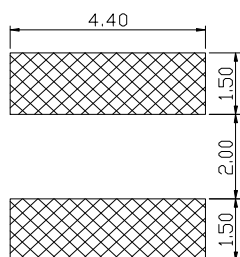


(2) PIS3D15P

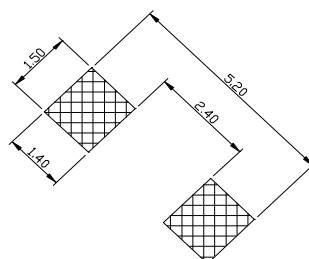


### RECOMMENDED FOOTPRINT(mm)

(1) PIS3D15

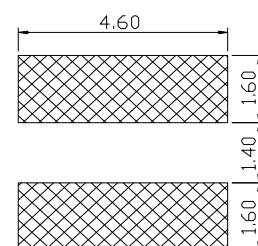


Recommand Pad Layout 1



Recommand Pad Layout 2

(2) PIS3D15P



Recommand Pad Layout

## PIS3D15(P) Series

### Low Profile SMD Inductors for Power Line

#### ELECTRICAL CHARACTERISTICS

| Part Number       | Inductance<br>(uH) | Tolerance<br>(±%) | Rdc Typ.<br>(Ω) | Idc Typ.(mA) |         | Irms Typ. (mA)<br>T ↑ 25°C | Color Coding |
|-------------------|--------------------|-------------------|-----------------|--------------|---------|----------------------------|--------------|
|                   |                    |                   |                 | L ↓ 10%      | L ↓ 35% |                            |              |
| PIS3D15(P)-R50□-T | 0.5 / 1KHz         | 30                | 0.035           | 3100         | 3900    | 2500                       | Black        |
| PIS3D15(P)-1R0□-T | 1 / 1KHz           | 20,30             | 0.040           | 2300         | 3000    | 2400                       | Black        |
| PIS3D15(P)-1R2□-T | 1.2 / 1KHz         | 20,30             | 0.043           | 2200         | 2800    | 2340                       | Brown        |
| PIS3D15(P)-1R5□-T | 1.5 / 1KHz         | 20,30             | 0.050           | 2000         | 2600    | 2300                       | Red          |
| PIS3D15(P)-1R8□-T | 1.8 / 1KHz         | 20,30             | 0.055           | 1660         | 2300    | 2100                       | Orange       |
| PIS3D15(P)-2R2□-T | 2.2 / 1KHz         | 20,30             | 0.071           | 1600         | 2200    | 2000                       | Yellow       |
| PIS3D15(P)-2R7□-T | 2.7 / 1KHz         | 20,30             | 0.078           | 1400         | 2000    | 1600                       | Green        |
| PIS3D15(P)-3R3□-T | 3.3 / 1KHz         | 20,30             | 0.087           | 1340         | 2000    | 1600                       | Blue         |
| PIS3D15(P)-3R9□-T | 3.9 / 1KHz         | 20,30             | 0.100           | 1200         | 1800    | 1500                       | Violet       |
| PIS3D15(P)-4R7□-T | 4.7 / 1KHz         | 20,30             | 0.137           | 1140         | 1600    | 1400                       | Gray         |
| PIS3D15(P)-5R6□-T | 5.6 / 1KHz         | 20,30             | 0.147           | 1060         | 1460    | 1200                       | White        |
| PIS3D15(P)-6R8□-T | 6.8 / 1KHz         | 20,30             | 0.170           | 1000         | 1400    | 1150                       | Black        |
| PIS3D15(P)-8R2□-T | 8.2 / 1KHz         | 20,30             | 0.195           | 940          | 1280    | 1100                       | Brown        |
| PIS3D15(P)-100□-T | 10 / 1KHz          | 20                | 0.228           | 900          | 1160    | 1020                       | Red          |
| PIS3D15(P)-120□-T | 12 / 1KHz          | 20                | 0.275           | 880          | 1080    | 900                        | Orange       |
| PIS3D15(P)-150□-T | 15 / 1KHz          | 20                | 0.340           | 640          | 860     | 720                        | Yellow       |
| PIS3D15(P)-180□-T | 18 / 1KHz          | 20                | 0.380           | 600          | 820     | 680                        | Green        |
| PIS3D15(P)-220□-T | 22 / 1KHz          | 20                | 0.495           | 540          | 740     | 650                        | Blue         |
| PIS3D15(P)-270□-T | 27 / 1KHz          | 20                | 0.735           | 500          | 700     | 550                        | Violet       |
| PIS3D15(P)-330□-T | 33 / 1KHz          | 20                | 0.890           | 460          | 580     | 480                        | Gray         |
| PIS3D15(P)-390□-T | 39 / 1KHz          | 20                | 1.000           | 400          | 560     | 420                        | White        |
| PIS3D15(P)-470□-T | 47 / 1KHz          | 20                | 1.150           | 340          | 520     | 350                        | Black        |

1. When ordering, please specify tolerance and packaging codes. Ex: PIS3D15-3R3M-T  
Tolerance : M = ± 20% , N = ± 30%  
Packaging : Clear tape and reel { standard }.
2. L , Idc : Agilent/HP 4284A, 1KHz with 1V
3. Rdc : DIGITAL MILLIOHM METER Chroma 16502, or equivalent.
4. Idc for Inductance drop 10% or 35% from its value without current.
5. Irms for a 25°C rise above 25°C ambient.
6. Operating temperature range from -25°C to 105°C.
7. Packaging quantity: 1000 pcs/reel